

LAZY ACRES

THE NW 1/4 OF SEC. 35 T18N R13W
WEBBER TWP
LAKE CO., MICH.

SHEET NO. 2 OF 4 SHEETS



ALL DIMENSIONS ARE IN FEET AND DECIMALS THEREOF

CERTIFICATE OF APPROVAL BY THE BOARD OF COUNTY ROAD COMMISSIONERS:

This plat has been examined, and was approved on the 20th day of June 1960, by the Lake Co. Board of Road Commissioners.

H. E. Wicks Chr.

Alfred Kinsey
Alfred Kinsey
Albert Berzley
Albert Berzley

COUNTY TREASURER'S CERTIFICATE RELATING TO TAXES:

Office of the county treasurer, Lake County, Michigan:

I hereby certify that there are no tax liens or titles held by the State on the lands described herein, and that there are no tax liens or titles held by individuals on said lands, for the five years preceding the 1st day of June 1960, and that the taxes for said period of five years are paid, as shown by the records of this office.

This certificate does not apply to taxes, if any, now in the process of collection by township, or county collecting officers.

Earl Gibson
Earl Gibson County Treasurer

CERTIFICATE OF MEDICAL APPROVAL:

This plat was approved by the Township Board of the Township of Webber at a meeting held on the 20th day of June 1960, and that the width of lots is in compliance with requirements of Sec. 30, act 172 of 1929 as amended.

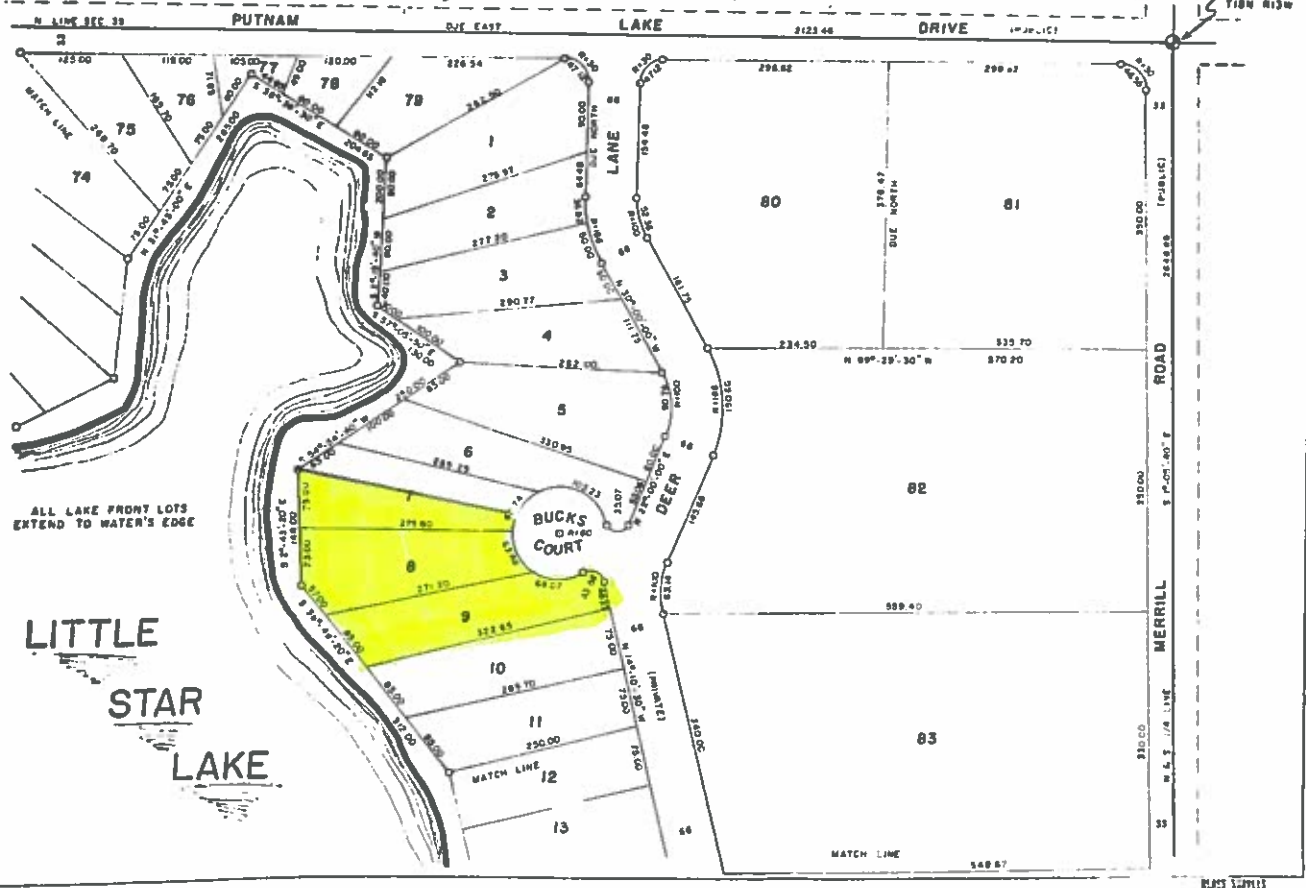
Mary Merrill
Mary Merrill Twp. Clerk

CERTIFICATE OF APPROVAL BY COUNTY BOARD:

This plat was approved on the 20th day of June 1960 by the Lake County Flat Board.

Earl Gibson
Earl Gibson Co. Treasurer

Gary Burnett Chr. Bd. of Supp.



ROB
NW 1/4 COR.
SEC. 35
T18N R13W

ALL LAKE FRONT LOTS EXTEND TO WATER'S EDGE

LITTLE
STAR
LAKE

BLUES COPPER
BALDWIN, MICH.

